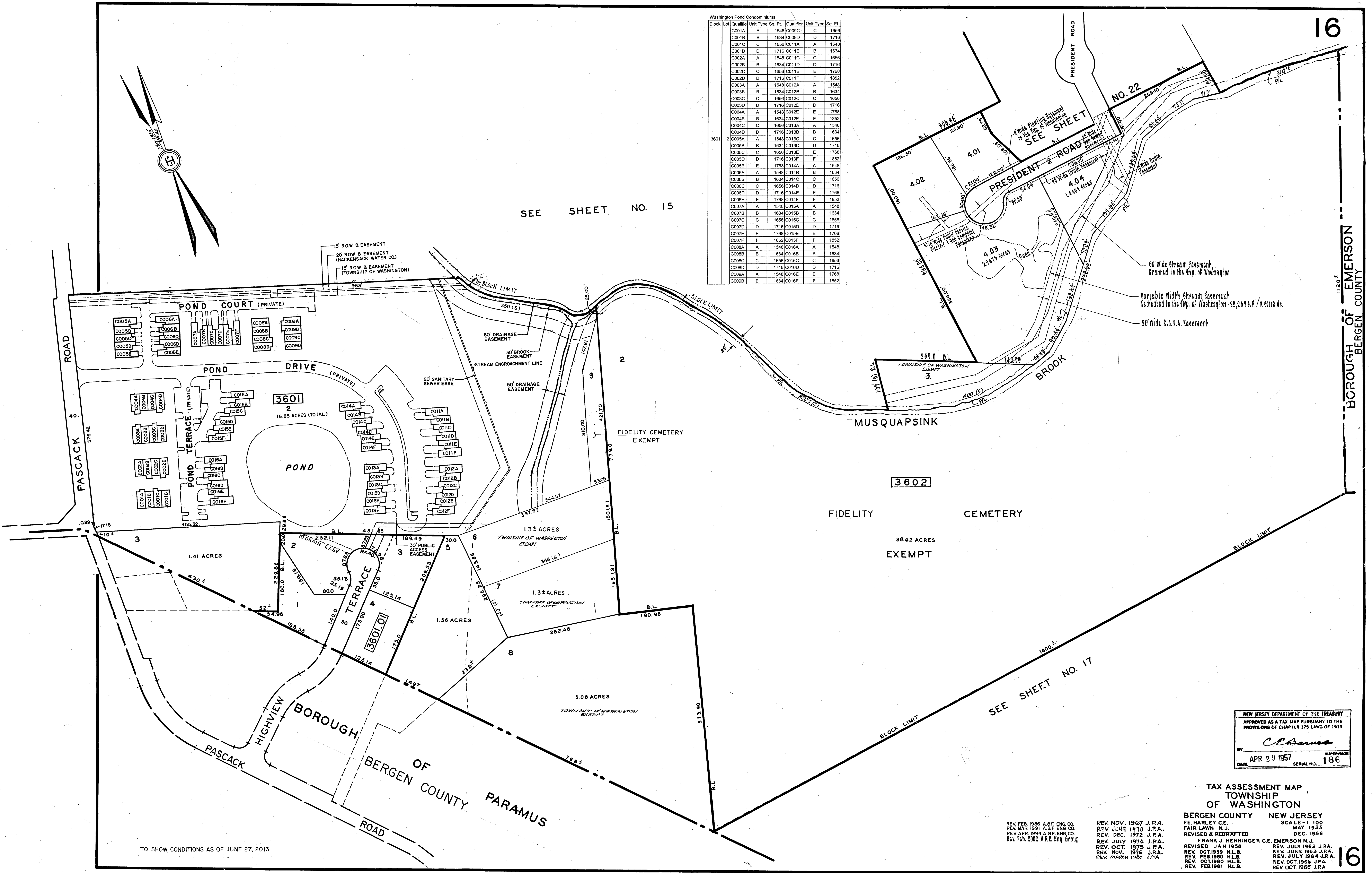


Block	Lot	Qualifier	Unit Type	Sq. Ft.	Qualifier	Unit Type	Sq. Ft.
3601	2	C001A	A	1548	C009C	C	1656
3601	2	C001B	B	1634	C009D	D	1716
3601	2	C001C	C	1656	C011A	A	1548
3601	2	C001D	D	1716	C011B	B	1634
3601	2	C002A	A	1548	C011C	C	1656
3601	2	C002B	B	1634	C011D	D	1716
3601	2	C002C	C	1656	C011E	E	1768
3601	2	C002D	D	1716	C011F	F	1852
3601	2	C003A	A	1548	C012A	A	1548
3601	2	C003B	B	1634	C012B	B	1634
3601	2	C003C	C	1656	C012C	C	1656
3601	2	C003D	D	1716	C012D	D	1716
3601	2	C004A	A	1548	C012E	E	1768
3601	2	C004B	B	1634	C012F	F	1852
3601	2	C004C	C	1656	C013A	A	1548
3601	2	C004D	D	1716	C013B	B	1634
3601	2	C005A	A	1548	C013C	C	1656
3601	2	C005B	B	1634	C013D	D	1716
3601	2	C005C	C	1656	C013E	E	1768
3601	2	C005D	D	1716	C013F	F	1852
3601	2	C005E	E	1768	C014A	A	1548
3601	2	C005F	F	1852	C014B	B	1634
3601	2	C006A	A	1548	C014C	C	1656
3601	2	C006B	B	1634	C014D	D	1716
3601	2	C006C	C	1656	C014E	E	1768
3601	2	C006D	D	1716	C014F	F	1852
3601	2	C007A	A	1548	C015A	A	1548
3601	2	C007B	B	1634	C015B	B	1634
3601	2	C007C	C	1656	C015C	C	1656
3601	2	C007D	D	1716	C015D	D	1716
3601	2	C007E	E	1768	C015E	E	1768
3601	2	C007F	F	1852	C015F	F	1852
3601	2	C008A	A	1548	C016A	A	1548
3601	2	C008B	B	1634	C016B	B	1634
3601	2	C008C	C	1656	C016C	C	1656
3601	2	C008D	D	1716	C016D	D	1716
3601	2	C008A	A	1548	C016E	E	1768
3601	2	C008B	B	1634	C016F	F	1852

SEE SHEET NO. 15

SEE SHEET NO. 17



TO SHOW CONDITIONS AS OF JUNE 27, 2013

NEW JERSEY DEPARTMENT OF THE TREASURY  
 APPROVED AS A TAX MAP PURSUANT TO THE PROVISIONS OF CHAPTER 175 LAWS OF 1913  
 BY *C. Harney*  
 DATE APR 23 1957 SUPERVISOR SERIAL NO. 186

TAX ASSESSMENT MAP  
 TOWNSHIP OF WASHINGTON  
 BERGEN COUNTY NEW JERSEY  
 SCALE: 1" = 100'  
 FAIR LAWN N.J. MAY 1935  
 REVISED & REDRAFTED DEC. 1956  
 FRANK J. HENNINGER C.E. EMERSON N.J.  
 REVISED JAN 1958  
 REV. OCT 1959 H.L.B.  
 REV. FEB 1960 H.L.B.  
 REV. OCT 1968 H.L.B.  
 REV. FEB 1961 H.L.B.  
 REV. NOV. 1967 J.P.A.  
 REV. JUNE 1970 J.P.A.  
 REV. DEC. 1972 J.P.A.  
 REV. JULY 1974 J.P.A.  
 REV. OCT. 1975 J.P.A.  
 REV. NOV. 1976 J.P.A.  
 REV. MARCH 1980 J.P.A.  
 REV. JULY 1962 J.P.A.  
 REV. JUNE 1963 J.P.A.  
 REV. JULY 1964 J.P.A.  
 REV. OCT. 1968 J.P.A.  
 REV. OCT. 1966 J.P.A.