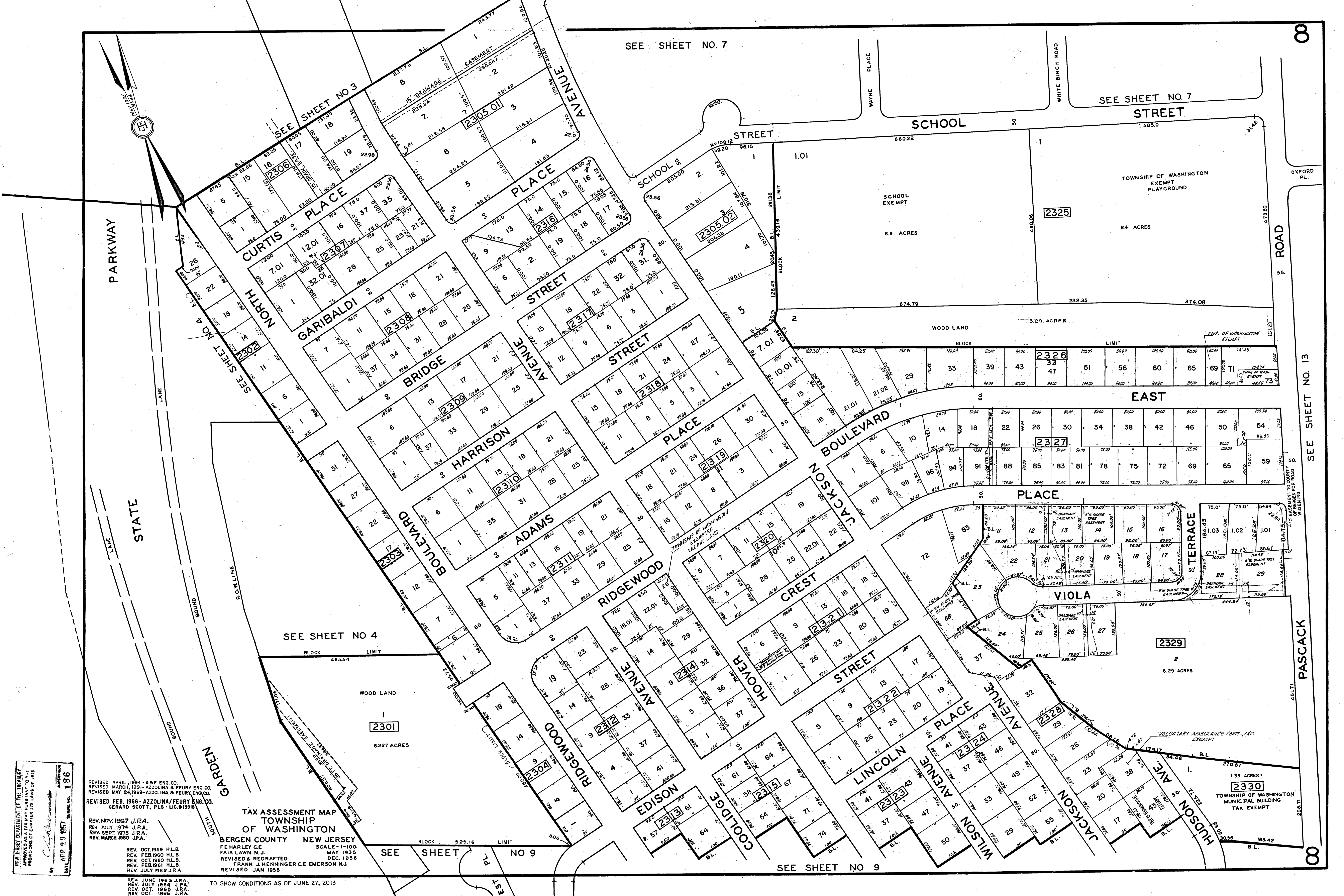


SEE SHEET NO. 7

SEE SHEET NO. 7

08



NEW JERSEY DEPARTMENT OF THE TREASURY
APPROVED AS A TAX MAP PURSUANT TO THE
PROVISIONS OF CHAPTER 125 LAWS OF 1913
DATE APR 29 1957

REVISED APRIL, 1934 - A.B.F. ENG. CO.
REVISED MARCH, 1931 - AZZOLINA & FEURY ENG. CO.
REVISED MAY 24, 1928 - AZZOLINA & FEURY ENG. CO.
REVISED FEB. 1926 - AZZOLINA/FEURY ENG. CO.
GERARD SCOTT, PLS. - LIC. #13916

REV. NOV. 1907 J.P.A.
REV. JULY, 1974 J.P.A.
REV. SEPT. 1975 J.P.A.
REV. MARCH 1980 J.P.A.

REV. OCT. 1959 H.L.B.
REV. FEB. 1960 H.L.B.
REV. OCT. 1960 H.L.B.
REV. FEB. 1961 H.L.B.
REV. JULY 1962 J.P.A.

**TAX ASSESSMENT MAP
TOWNSHIP
OF WASHINGTON**
BERGEN COUNTY NEW JERSEY
F. HARLEY C.E. SCALE 1-100
FAIR LAWN N.J. MAY 1935
REVISED & REDRAFTED DEC. 1956
FRANK J. HENNINGER C.E. EMERSON N.J.
REVISED JAN 1958

SEE SHEET NO 9

SEE SHEET NO 9

SEE SHEET NO. 13

PASCACK

08