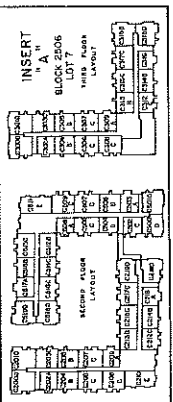
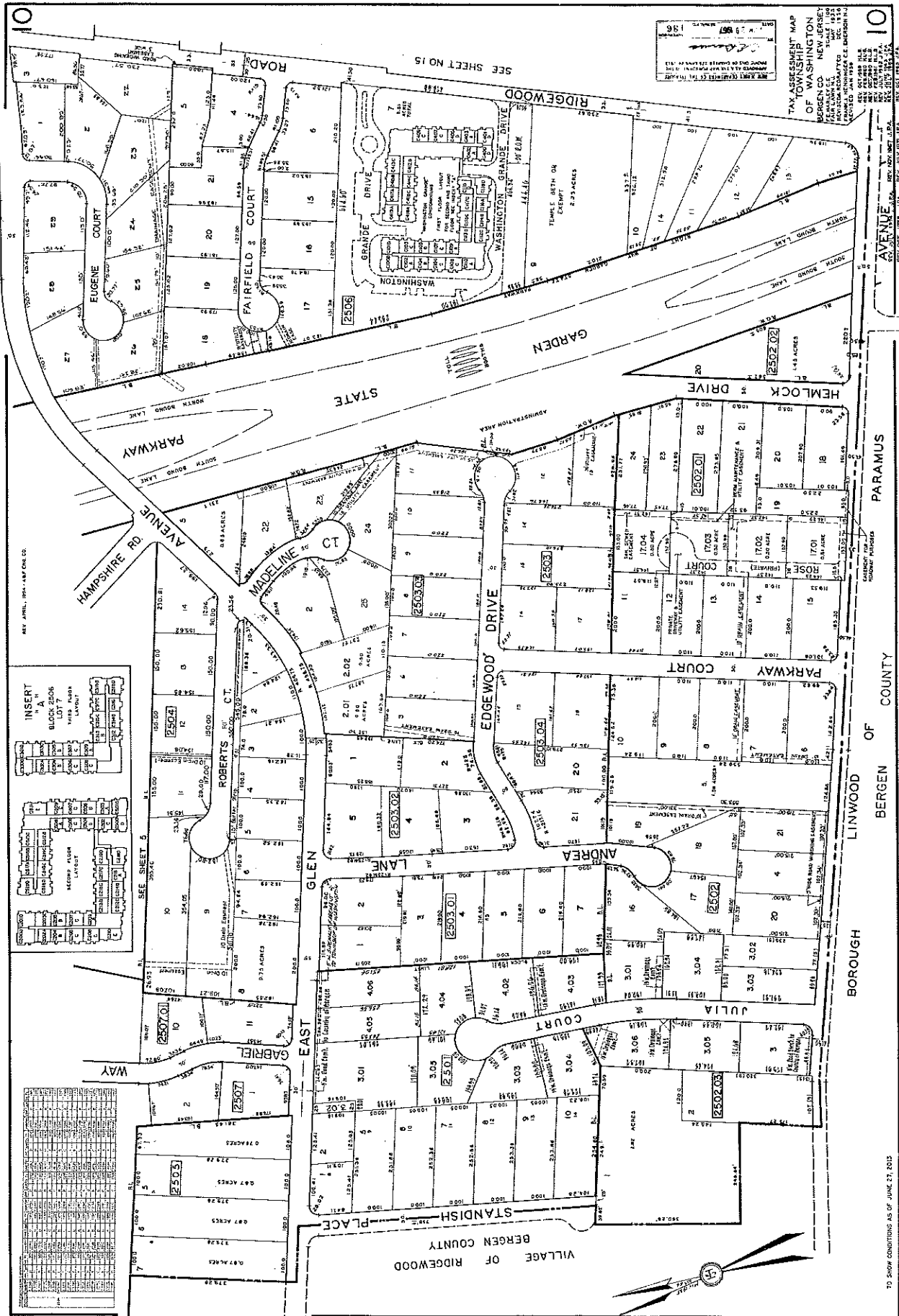


SEE SHEET NO. 9

VILLAGE OF RIDGEWOOD
BERGEN COUNTY



SEE SHEET 5

Lot No.	Area	Remarks
1	0.73 ACRES	
2	0.87 ACRES	
3	0.87 ACRES	
4	0.87 ACRES	
5	0.87 ACRES	
6	0.87 ACRES	
7	0.87 ACRES	
8	0.87 ACRES	
9	0.87 ACRES	
10	0.87 ACRES	
11	0.87 ACRES	
12	0.87 ACRES	
13	0.87 ACRES	
14	0.87 ACRES	
15	0.87 ACRES	
16	0.87 ACRES	
17	0.87 ACRES	
18	0.87 ACRES	
19	0.87 ACRES	
20	0.87 ACRES	
21	0.87 ACRES	
22	0.87 ACRES	
23	0.87 ACRES	
24	0.87 ACRES	
25	0.87 ACRES	
26	0.87 ACRES	
27	0.87 ACRES	
28	0.87 ACRES	
29	0.87 ACRES	
30	0.87 ACRES	
31	0.87 ACRES	
32	0.87 ACRES	
33	0.87 ACRES	
34	0.87 ACRES	
35	0.87 ACRES	
36	0.87 ACRES	
37	0.87 ACRES	
38	0.87 ACRES	
39	0.87 ACRES	
40	0.87 ACRES	
41	0.87 ACRES	
42	0.87 ACRES	
43	0.87 ACRES	
44	0.87 ACRES	
45	0.87 ACRES	
46	0.87 ACRES	
47	0.87 ACRES	
48	0.87 ACRES	
49	0.87 ACRES	
50	0.87 ACRES	

SCALE 1" = 100'

TAX ASSESSMENT MAP
OF WASHINGTON
BERGEN CO. NEW JERSEY
TAX MAP NO. 136
REV. DATE 06/27/2013
PROJECT NO. 08000000000000000000
DRAWN BY: J. H. HARRIS
CHECKED BY: J. H. HARRIS
DATE: 06/27/2013

TO SHOW CONDITIONS AS OF JUNE 27, 2013

PARAMUS
LINWOOD
BOROUGH
BERGEN
COUNTY

SEE SHEET NO. 10