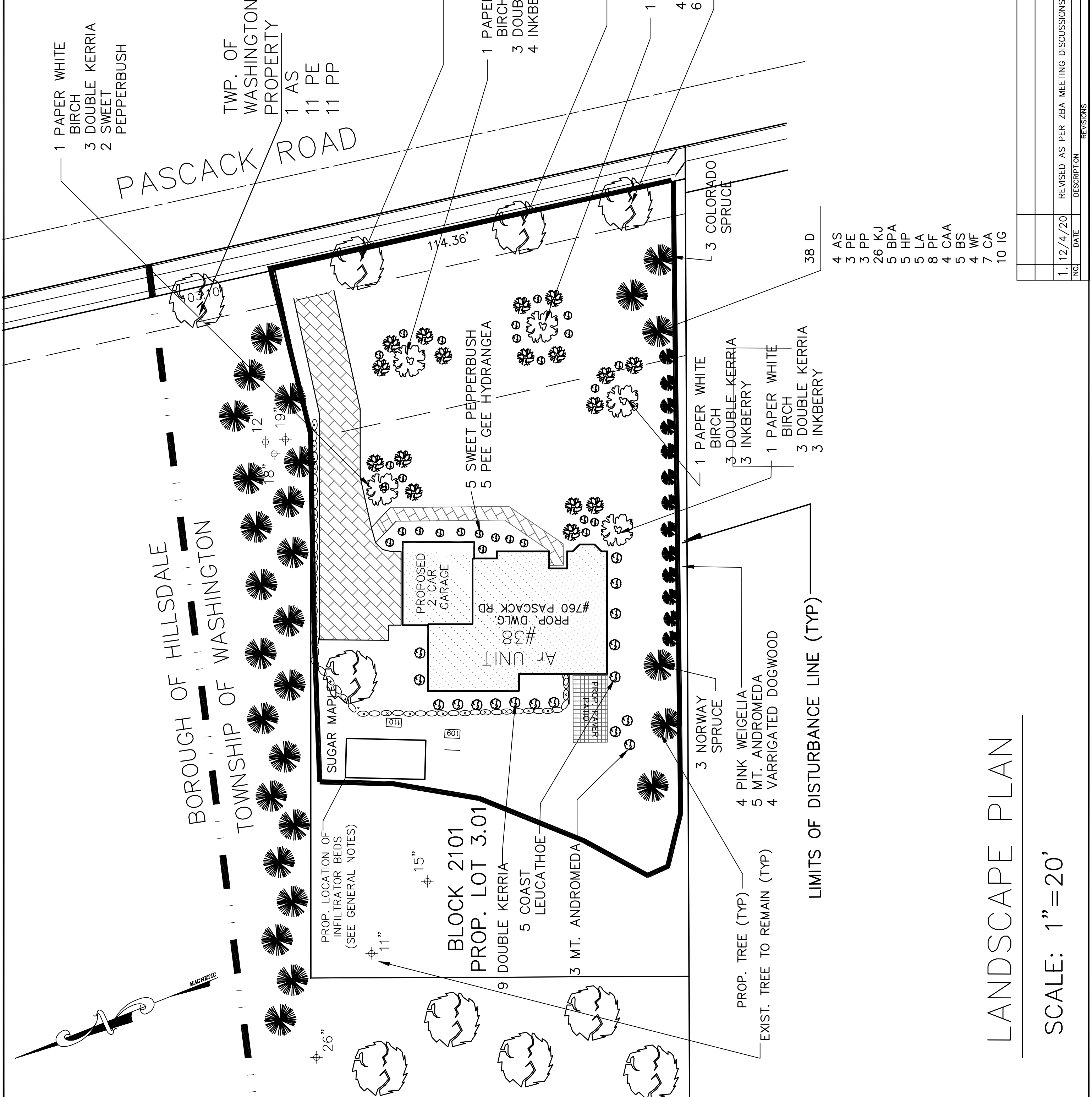


KEY QUAN.	BOTANICAL NAME	COMMON NAME	HT
	TREES		
AS	ACER SACCHARUM	SUGAR MAPLE	11-13'
BPA	BETULA Papyrifera	PAPER WHITE BIRCH	11-13'
PE	PICEA EXCELSA	NORWAY SPRUCE	7-8'
PP	PICEA Pungens	COLORADO SPRUCE	6-7'
QA	QUERCUS ALBA	WHITE OAK	11-13'
OS	QUERCUS STELLATA	POST OAK	10-12'
OR	QUERCUS RUBRA	NORTHERN RED OAK	10-11'
FP	FRAXINUS PENNSYLVANICA	PENNSYLVANIA ASH	11-13'
COT	CARYA OVATA	SHAGBARKHICKORY	10-11'
UR	ULMUS RUBRA	SLIPPERY ELM	11-13'

KEY QUAN.	BOTANICAL NAME	COMMON NAME	HT
	SHRUBS		
CA	CLETHRA ALNIFOLIA	SWEET PEPPERBUSH	18-24'
HP	HYDRANGEA PANICULATA	PEE GEE HYDRANGEA	18-24"
BS	BUXUS SEMPERVIRENS	COMMON BOXWOOD	18-24'
WF	WEIGELIA FLORIDA	PINK WEIGELIA	2-3'
LA	LEUCOTHOE AXILLARIS	COAST LEUCOTHOE	15-18'
KJ	KERRIA JAPONICA 'PLENIFLORA'	DOUBLE KERRIA	18-24"
CAA	CORNUS ALBA ELEGANTISSIMA	VARRIGATED DOGWOOD	3-4'
PF	PIERIS FLORIBUNDA	MOUNTAIN ANDROMEDA	18-24"
KL	KALMIA LATIFOLIA	MOUNTAIN LAUREL	2-3'
IG	ILEX GLABRA COMPACTA	INKBERRY	18-24"
CAP	COTONEASTER APICULATA	CRANBERRY COTONEASTER	18-24'



LANDSCAPE PLAN FOR LOT 3.01

MAJOR SUBDIVISION AND SITE PLAN FOR

THE RESERVE AT ARDEN PLACE

AN ACTIVE ADULT COMMUNITY PROJECT
(AKA PHASE 2 OF GOLDEN ORCHARDS DEVELOPMENT)
BLOCK 2101, LOTS 3 & 7
TOWNSHIP OF WASHINGTON, BERGEN COUNTY, NEW JERSEY

Drawn by: Y.M. | Scale: 1"=20' | Date: 11/03/20 | Dwg. No.: 2 OF 8 | Proj. No.: 00-058.9

ENTEC

Engineering & Technical Resources, Inc.
Consulting Engineers Certificate # 24GA2795200
886 Belmont Avenue, No. Haledon, N.J. 07508 tel.(973)636-9223

ALEX J. ZEPPONI PROFESSIONAL ENGINEER, N.J. LIC. No. 26723

NO.	DATE	DESCRIPTION	REVISIONS
1.	12/4/20	REVISED AS PER ZBA MEETING DISCUSSIONS	