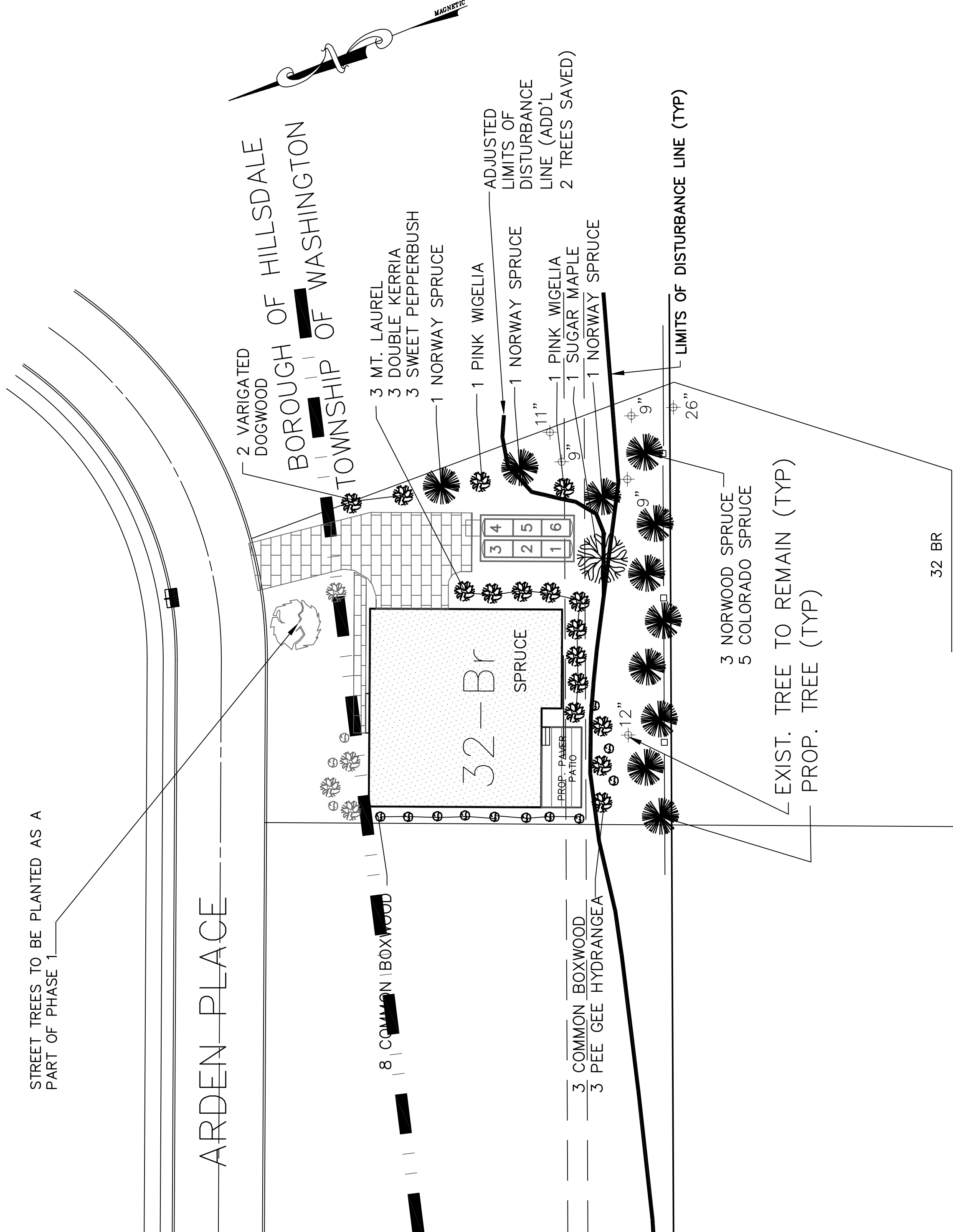


STREET TREES TO BE PLANTED AS A PART OF PHASE 1

ARDEN PLACE

8 COMMON BOXWOOD

3 COMMON BOXWOOD
3 PEE GEE HYDRANGEA



3 NORWOOD SPRUCE
5 COLORADO SPRUCE

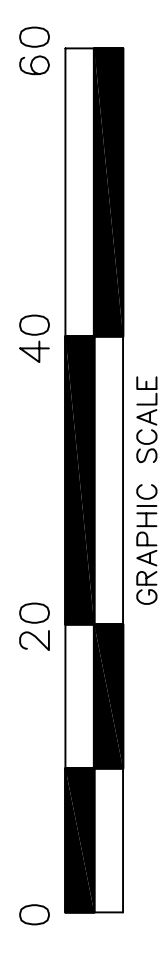
EXIST. TREE TO REMAIN (TYP)
PROP. TREE (TYP)

32 BR

- 1 AS
- 5 PE
- 5 PP
- 11 BS
- 3 HP
- 2 CAA
- 2 WF
- 3 CA
- 3 KJ
- 3 KL

TREES		
AS	ACER SACCHARUM	11-13'
PE	PICEA EXCELSA	7-8'
PP	PICEA PUNGENS	6-7'
QA	QUERCUS ALBA	11-13'
QS	QUERCUS STELLATA	10-12'
QR	QUERCUS RUBRA	10-11'
FP	FRAXINUS PENSYLVANICA	11-13'
COT	CARYA OVATA	10-11'
UR	ULMUS RUBRA	11-13'

SHRUBS		
CA	CLETHRA ALNIFOLIA	18-24"
HP	HYDRANGEA PANICULATA GRANDIFLOR	18-24"
BS	BUXUS SEMPERVIRENS	18-24"
WF	WEIGELIA FLORIDA	2-3'
LA	LEUCOTHOE AXILLARIS	15-18"
KJ	KERRIA JAPONICA 'PLENIFLORA'	18-24"
CAA	CORNUS ALBA ELEGANTISSIMA	3-4'
PF	PIERIS FLORIBUNDA	18-24"
KL	KALMIA LATIFOLIA	2-3'
IG	ILEX GLABRA COMPACTA	18-24"
CAP	COTONEASTER APICULATA	18-24"



LANDSCAPE PLAN EXHIBIT FOR #32

MAJOR SUBDIVISION AND SITE PLAN FOR
THE RESERVE AT ARDEN PLACE
AN ACTIVE ADULT COMMUNITY PROJECT
(AKA PHASE 2 OF GOLDEN ORCHARDS DEVELOPMENT)
BLOCK 2101, LOTS 9 & 7
TOWNSHIP OF WASHINGTON, BERGEN COUNTY, NEW JERSEY

Drawn by	Y.M.	Scale	A.Z.	1"=20'	Date	11/03/20	Drawn No.	6 OF 8	Proj. No.	00-058.9
----------	------	-------	------	--------	------	----------	-----------	--------	-----------	----------

ENTEC
Engineering & Technical Resources, Inc.
Consulting Engineers Certificate # 24GA2795200
886 Belmont Avenue, No. Haledon, N.J. 07508 tel.(973)636-9223

ALEX J. ZEPPONI PROFESSIONAL ENGINEER, N.J. LIC. No. 26723

LANDSCAPE PLAN

SCALE: 1"=20'

NO.	DATE	DESCRIPTION	REVISIONS
1.	12/4/20	REVISED AS PER ZBA MEETING DISCUSSIONS	