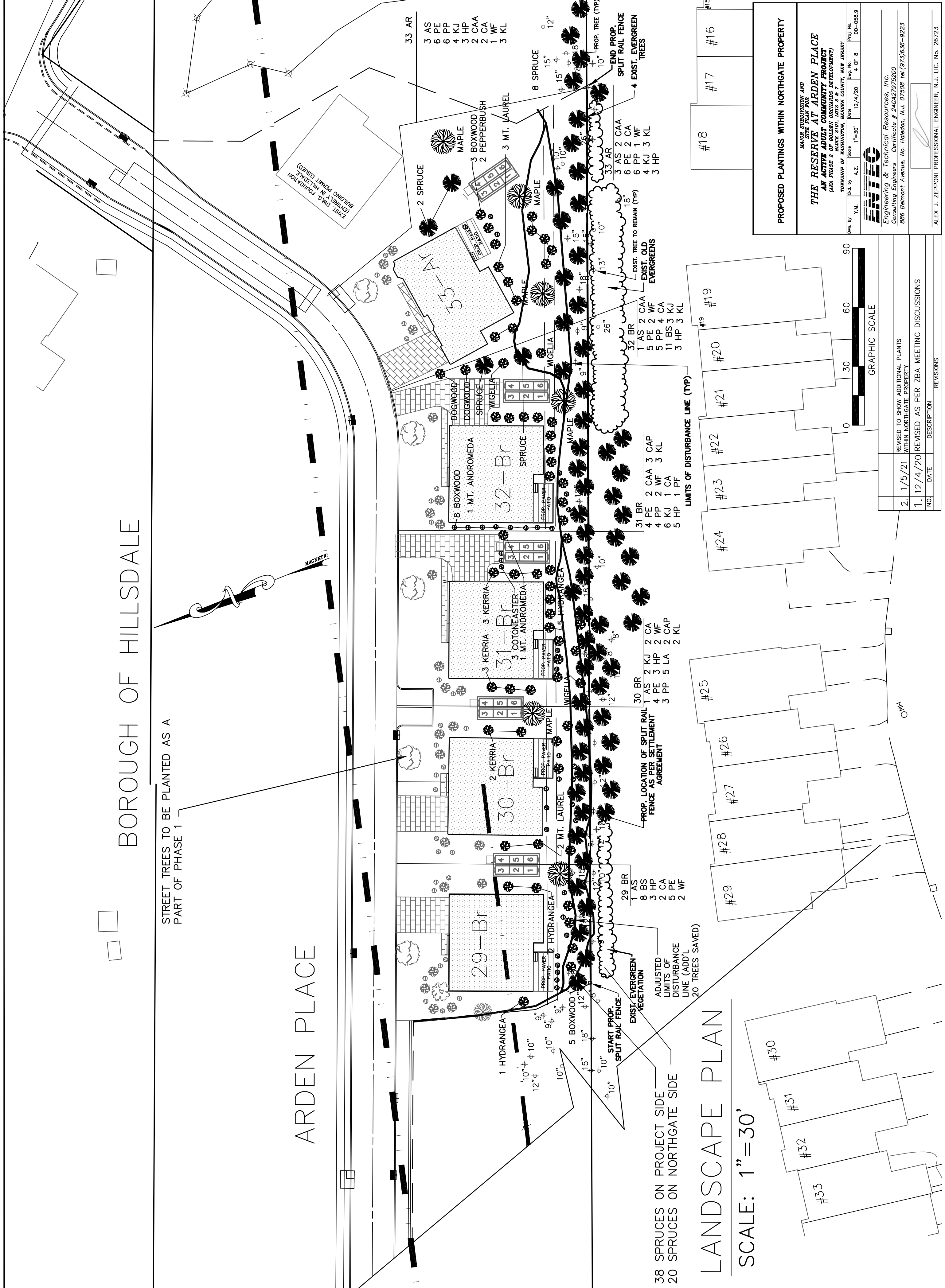


BOROUGH OF HILLSDALE

STREET TREES TO BE PLANTED AS A PART OF PHASE 1

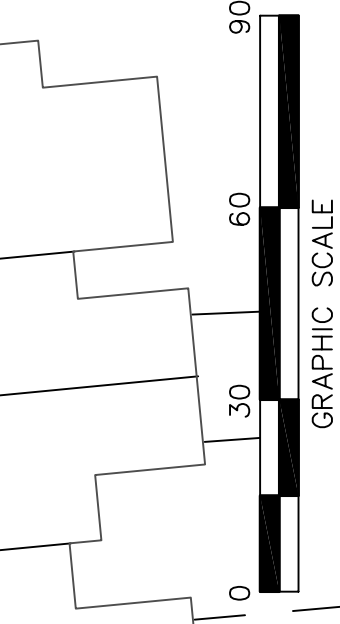
ARDEN PLACE



38 SPRUCES ON PROJECT SIDE
20 SPRUCES ON NORTHGATE SIDE

LANDSCAPE PLAN

SCALE: 1" = 30'



PROPOSED PLANTINGS WITHIN NORTHGATE PROPERTY

MAJOR SUBDIVISION AND SITE PLAN FOR
THE RESERVE AT ARDEN PLACE
(AKA PHASE 4 OF GOLDEN ORCHARD DEVELOPMENT)

TOWNSHIP OF WASHINGTON, BERGEN COUNTY, NEW JERSEY
Date: 12/4/20
Scale: 1"=30'
Sheet No. 4 OF 8
Proj. No. 00-088.9



Engineering & Technical Resources, Inc.
Consulting Engineers Certificate # 24622792500
886 Belmont Avenue, No. Haledon, N.J. 07508 Tel: (973) 636-9223

NO. DATE DESCRIPTION REVISIONS

NO.	DATE	DESCRIPTION	REVISIONS
2.	1/5/21	REVISED TO SHOW ADDITIONAL PLANTS WITHIN NORTHGATE PROPERTY	
1.	12/4/20	REVISED AS PER ZBA MEETING DISCUSSIONS	

ALEX J. ZEPFONI PROFESSIONAL ENGINEER, N.J. LIC. No. 26723