

PROPERTY BOUNDARY SHEET

LOT NO.	AREA (SQ. FT.)	AREA (SQ. YD.)	PERCENTAGE OF TOTAL AREA
01-A	10,000	0.73	0.73%
01-B	10,000	0.73	0.73%
02-A	10,000	0.73	0.73%
02-B	10,000	0.73	0.73%
03-A	10,000	0.73	0.73%
03-B	10,000	0.73	0.73%
04-A	10,000	0.73	0.73%
04-B	10,000	0.73	0.73%
05-A	10,000	0.73	0.73%
05-B	10,000	0.73	0.73%
06-A	10,000	0.73	0.73%
06-B	10,000	0.73	0.73%
07-A	10,000	0.73	0.73%
07-B	10,000	0.73	0.73%
08-A	10,000	0.73	0.73%
08-B	10,000	0.73	0.73%
09-A	10,000	0.73	0.73%
09-B	10,000	0.73	0.73%
10-A	10,000	0.73	0.73%
10-B	10,000	0.73	0.73%
11-A	10,000	0.73	0.73%
11-B	10,000	0.73	0.73%
12-A	10,000	0.73	0.73%
12-B	10,000	0.73	0.73%
13-A	10,000	0.73	0.73%
13-B	10,000	0.73	0.73%
14-A	10,000	0.73	0.73%
14-B	10,000	0.73	0.73%
15-A	10,000	0.73	0.73%
15-B	10,000	0.73	0.73%
16-A	10,000	0.73	0.73%
16-B	10,000	0.73	0.73%
17-A	10,000	0.73	0.73%
17-B	10,000	0.73	0.73%
18-A	10,000	0.73	0.73%
18-B	10,000	0.73	0.73%
19-A	10,000	0.73	0.73%
19-B	10,000	0.73	0.73%
20-A	10,000	0.73	0.73%
20-B	10,000	0.73	0.73%
21-A	10,000	0.73	0.73%
21-B	10,000	0.73	0.73%
22-A	10,000	0.73	0.73%
22-B	10,000	0.73	0.73%
23-A	10,000	0.73	0.73%
23-B	10,000	0.73	0.73%
24-A	10,000	0.73	0.73%
24-B	10,000	0.73	0.73%
25-A	10,000	0.73	0.73%
25-B	10,000	0.73	0.73%
26-A	10,000	0.73	0.73%
26-B	10,000	0.73	0.73%
27-A	10,000	0.73	0.73%
27-B	10,000	0.73	0.73%
28-A	10,000	0.73	0.73%
28-B	10,000	0.73	0.73%
29-A	10,000	0.73	0.73%
29-B	10,000	0.73	0.73%
30-A	10,000	0.73	0.73%
30-B	10,000	0.73	0.73%
31-A	10,000	0.73	0.73%
31-B	10,000	0.73	0.73%
32-A	10,000	0.73	0.73%
32-B	10,000	0.73	0.73%
33-A	10,000	0.73	0.73%
33-B	10,000	0.73	0.73%
34-A	10,000	0.73	0.73%
34-B	10,000	0.73	0.73%
35-A	10,000	0.73	0.73%
35-B	10,000	0.73	0.73%
36-A	10,000	0.73	0.73%
36-B	10,000	0.73	0.73%
37-A	10,000	0.73	0.73%
37-B	10,000	0.73	0.73%
38-A	10,000	0.73	0.73%
38-B	10,000	0.73	0.73%
39-A	10,000	0.73	0.73%
39-B	10,000	0.73	0.73%
40-A	10,000	0.73	0.73%
40-B	10,000	0.73	0.73%
41-A	10,000	0.73	0.73%
41-B	10,000	0.73	0.73%
42-A	10,000	0.73	0.73%
42-B	10,000	0.73	0.73%
43-A	10,000	0.73	0.73%
43-B	10,000	0.73	0.73%
44-A	10,000	0.73	0.73%
44-B	10,000	0.73	0.73%
45-A	10,000	0.73	0.73%
45-B	10,000	0.73	0.73%
46-A	10,000	0.73	0.73%
46-B	10,000	0.73	0.73%
47-A	10,000	0.73	0.73%
47-B	10,000	0.73	0.73%
48-A	10,000	0.73	0.73%
48-B	10,000	0.73	0.73%
49-A	10,000	0.73	0.73%
49-B	10,000	0.73	0.73%
50-A	10,000	0.73	0.73%
50-B	10,000	0.73	0.73%
51-A	10,000	0.73	0.73%
51-B	10,000	0.73	0.73%
52-A	10,000	0.73	0.73%
52-B	10,000	0.73	0.73%
53-A	10,000	0.73	0.73%
53-B	10,000	0.73	0.73%
54-A	10,000	0.73	0.73%
54-B	10,000	0.73	0.73%
55-A	10,000	0.73	0.73%
55-B	10,000	0.73	0.73%
56-A	10,000	0.73	0.73%
56-B	10,000	0.73	0.73%
57-A	10,000	0.73	0.73%
57-B	10,000	0.73	0.73%
58-A	10,000	0.73	0.73%
58-B	10,000	0.73	0.73%
59-A	10,000	0.73	0.73%
59-B	10,000	0.73	0.73%
60-A	10,000	0.73	0.73%
60-B	10,000	0.73	0.73%
61-A	10,000	0.73	0.73%
61-B	10,000	0.73	0.73%
62-A	10,000	0.73	0.73%
62-B	10,000	0.73	0.73%
63-A	10,000	0.73	0.73%
63-B	10,000	0.73	0.73%
64-A	10,000	0.73	0.73%
64-B	10,000	0.73	0.73%
65-A	10,000	0.73	0.73%
65-B	10,000	0.73	0.73%
66-A	10,000	0.73	0.73%
66-B	10,000	0.73	0.73%
67-A	10,000	0.73	0.73%
67-B	10,000	0.73	0.73%
68-A	10,000	0.73	0.73%
68-B	10,000	0.73	0.73%
69-A	10,000	0.73	0.73%
69-B	10,000	0.73	0.73%
70-A	10,000	0.73	0.73%
70-B	10,000	0.73	0.73%
71-A	10,000	0.73	0.73%
71-B	10,000	0.73	0.73%
72-A	10,000	0.73	0.73%
72-B	10,000	0.73	0.73%
73-A	10,000	0.73	0.73%
73-B	10,000	0.73	0.73%
74-A	10,000	0.73	0.73%
74-B	10,000	0.73	0.73%
75-A	10,000	0.73	0.73%
75-B	10,000	0.73	0.73%
76-A	10,000	0.73	0.73%
76-B	10,000	0.73	0.73%
77-A	10,000	0.73	0.73%
77-B	10,000	0.73	0.73%
78-A	10,000	0.73	0.73%
78-B	10,000	0.73	0.73%
79-A	10,000	0.73	0.73%
79-B	10,000	0.73	0.73%
80-A	10,000	0.73	0.73%
80-B	10,000	0.73	0.73%
81-A	10,000	0.73	0.73%
81-B	10,000	0.73	0.73%
82-A	10,000	0.73	0.73%
82-B	10,000	0.73	0.73%
83-A	10,000	0.73	0.73%
83-B	10,000	0.73	0.73%
84-A	10,000	0.73	0.73%
84-B	10,000	0.73	0.73%
85-A	10,000	0.73	0.73%
85-B	10,000	0.73	0.73%
86-A	10,000	0.73	0.73%
86-B	10,000	0.73	0.73%
87-A	10,000	0.73	0.73%
87-B	10,000	0.73	0.73%
88-A	10,000	0.73	0.73%
88-B	10,000	0.73	0.73%
89-A	10,000	0.73	0.73%
89-B	10,000	0.73	0.73%
90-A	10,000	0.73	0.73%
90-B	10,000	0.73	0.73%
91-A	10,000	0.73	0.73%
91-B	10,000	0.73	0.73%
92-A	10,000	0.73	0.73%
92-B	10,000	0.73	0.73%
93-A	10,000	0.73	0.73%
93-B	10,000	0.73	0.73%
94-A	10,000	0.73	0.73%
94-B	10,000	0.73	0.73%
95-A	10,000	0.73	0.73%
95-B	10,000	0.73	0.73%
96-A	10,000	0.73	0.73%
96-B	10,000	0.73	0.73%
97-A	10,000	0.73	0.73%
97-B	10,000	0.73	0.73%
98-A	10,000	0.73	0.73%
98-B	10,000	0.73	0.73%
99-A	10,000	0.73	0.73%
99-B	10,000	0.73	0.73%
100-A	10,000	0.73	0.73%
100-B	10,000	0.73	0.73%

NOTE: ALL CONSTRUCTION SHALL BE IN ACCORDANCE WITH THE TOWNSHIP OF HILLSDALE ORDINANCES AND THE NEW JERSEY STATE DEPARTMENT OF TRANSPORTATION AND HIGHWAYS (NJDOT) STANDARD SPECIFICATIONS FOR ROAD AND BRIDGE CONSTRUCTION. THE CONTRACTOR SHALL BE RESPONSIBLE FOR OBTAINING ALL NECESSARY PERMITS AND APPROVALS FROM THE TOWNSHIP OF HILLSDALE AND THE NJDOT. THE CONTRACTOR SHALL BE RESPONSIBLE FOR OBTAINING ALL NECESSARY PERMITS AND APPROVALS FROM THE TOWNSHIP OF HILLSDALE AND THE NJDOT. THE CONTRACTOR SHALL BE RESPONSIBLE FOR OBTAINING ALL NECESSARY PERMITS AND APPROVALS FROM THE TOWNSHIP OF HILLSDALE AND THE NJDOT.

NOTE: THE PLAN HAS BEEN APPROVED BY THE TOWNSHIP OF WASHINGTON PLANNING BOARD ON 4/4/2016. THE PLAN HAS BEEN APPROVED BY THE TOWNSHIP OF WASHINGTON PLANNING BOARD ON 4/4/2016. THE PLAN HAS BEEN APPROVED BY THE TOWNSHIP OF WASHINGTON PLANNING BOARD ON 4/4/2016.

NOTE: THE PLAN HAS BEEN APPROVED BY THE TOWNSHIP OF WASHINGTON PLANNING BOARD ON 4/4/2016. THE PLAN HAS BEEN APPROVED BY THE TOWNSHIP OF WASHINGTON PLANNING BOARD ON 4/4/2016. THE PLAN HAS BEEN APPROVED BY THE TOWNSHIP OF WASHINGTON PLANNING BOARD ON 4/4/2016.

NOTE: THE PLAN HAS BEEN APPROVED BY THE TOWNSHIP OF WASHINGTON PLANNING BOARD ON 4/4/2016. THE PLAN HAS BEEN APPROVED BY THE TOWNSHIP OF WASHINGTON PLANNING BOARD ON 4/4/2016. THE PLAN HAS BEEN APPROVED BY THE TOWNSHIP OF WASHINGTON PLANNING BOARD ON 4/4/2016.

NOTE: THE PLAN HAS BEEN APPROVED BY THE TOWNSHIP OF WASHINGTON PLANNING BOARD ON 4/4/2016. THE PLAN HAS BEEN APPROVED BY THE TOWNSHIP OF WASHINGTON PLANNING BOARD ON 4/4/2016. THE PLAN HAS BEEN APPROVED BY THE TOWNSHIP OF WASHINGTON PLANNING BOARD ON 4/4/2016.

NOTE: THE PLAN HAS BEEN APPROVED BY THE TOWNSHIP OF WASHINGTON PLANNING BOARD ON 4/4/2016. THE PLAN HAS BEEN APPROVED BY THE TOWNSHIP OF WASHINGTON PLANNING BOARD ON 4/4/2016. THE PLAN HAS BEEN APPROVED BY THE TOWNSHIP OF WASHINGTON PLANNING BOARD ON 4/4/2016.

NOTE: THE PLAN HAS BEEN APPROVED BY THE TOWNSHIP OF WASHINGTON PLANNING BOARD ON 4/4/2016. THE PLAN HAS BEEN APPROVED BY THE TOWNSHIP OF WASHINGTON PLANNING BOARD ON 4/4/2016. THE PLAN HAS BEEN APPROVED BY THE TOWNSHIP OF WASHINGTON PLANNING BOARD ON 4/4/2016.

NOTE: THE PLAN HAS BEEN APPROVED BY THE TOWNSHIP OF WASHINGTON PLANNING BOARD ON 4/4/2016. THE PLAN HAS BEEN APPROVED BY THE TOWNSHIP OF WASHINGTON PLANNING BOARD ON 4/4/2016. THE PLAN HAS BEEN APPROVED BY THE TOWNSHIP OF WASHINGTON PLANNING BOARD ON 4/4/2016.

NOTE: THE PLAN HAS BEEN APPROVED BY THE TOWNSHIP OF WASHINGTON PLANNING BOARD ON 4/4/2016. THE PLAN HAS BEEN APPROVED BY THE TOWNSHIP OF WASHINGTON PLANNING BOARD ON 4/4/2016. THE PLAN HAS BEEN APPROVED BY THE TOWNSHIP OF WASHINGTON PLANNING BOARD ON 4/4/2016.

NOTE: THE PLAN HAS BEEN APPROVED BY THE TOWNSHIP OF WASHINGTON PLANNING BOARD ON 4/4/2016. THE PLAN HAS BEEN APPROVED BY THE TOWNSHIP OF WASHINGTON PLANNING BOARD ON 4/4/2016. THE PLAN HAS BEEN APPROVED BY THE TOWNSHIP OF WASHINGTON PLANNING BOARD ON 4/4/2016.

NOTE: THE PLAN HAS BEEN APPROVED BY THE TOWNSHIP OF WASHINGTON PLANNING BOARD ON 4/4/2016. THE PLAN HAS BEEN APPROVED BY THE TOWNSHIP OF WASHINGTON PLANNING BOARD ON 4/4/2016. THE PLAN HAS BEEN APPROVED BY THE TOWNSHIP OF WASHINGTON PLANNING BOARD ON 4/4/2016.

NOTE: THE PLAN HAS BEEN APPROVED BY THE TOWNSHIP OF WASHINGTON PLANNING BOARD ON 4/4/2016. THE PLAN HAS BEEN APPROVED BY THE TOWNSHIP OF WASHINGTON PLANNING BOARD ON 4/4/2016. THE PLAN HAS BEEN APPROVED BY THE TOWNSHIP OF WASHINGTON PLANNING BOARD ON 4/4/2016.

NOTE: THE PLAN HAS BEEN APPROVED BY THE TOWNSHIP OF WASHINGTON PLANNING BOARD ON 4/4/2016. THE PLAN HAS BEEN APPROVED BY THE TOWNSHIP OF WASHINGTON PLANNING BOARD ON 4/4/2016. THE PLAN HAS BEEN APPROVED BY THE TOWNSHIP OF WASHINGTON PLANNING BOARD ON 4/4/2016.

NOTE: THE PLAN HAS BEEN APPROVED BY THE TOWNSHIP OF WASHINGTON PLANNING BOARD ON 4/4/2016. THE PLAN HAS BEEN APPROVED BY THE TOWNSHIP OF WASHINGTON PLANNING BOARD ON 4/4/2016. THE PLAN HAS BEEN APPROVED BY THE TOWNSHIP OF WASHINGTON PLANNING BOARD ON 4/4/2016.

NOTE: THE PLAN HAS BEEN APPROVED BY THE TOWNSHIP OF WASHINGTON PLANNING BOARD ON 4/4/2016. THE PLAN HAS BEEN APPROVED BY THE TOWNSHIP OF WASHINGTON PLANNING BOARD ON 4/4/2016. THE PLAN HAS BEEN APPROVED BY THE TOWNSHIP OF WASHINGTON PLANNING BOARD ON 4/4/2016.

NOTE: THE PLAN HAS BEEN APPROVED BY THE TOWNSHIP OF WASHINGTON PLANNING BOARD ON 4/4/2016. THE PLAN HAS BEEN APPROVED BY THE TOWNSHIP OF WASHINGTON PLANNING BOARD ON 4/4/2016. THE PLAN HAS BEEN APPROVED BY THE TOWNSHIP OF WASHINGTON PLANNING BOARD ON 4/4/2016.

NOTE: THE PLAN HAS BEEN APPROVED BY THE TOWNSHIP OF WASHINGTON PLANNING BOARD ON 4/4/2016. THE PLAN HAS BEEN APPROVED BY THE TOWNSHIP OF WASHINGTON PLANNING BOARD ON 4/4/2016. THE PLAN HAS BEEN APPROVED BY THE TOWNSHIP OF WASHINGTON PLANNING BOARD ON 4/4/2016.

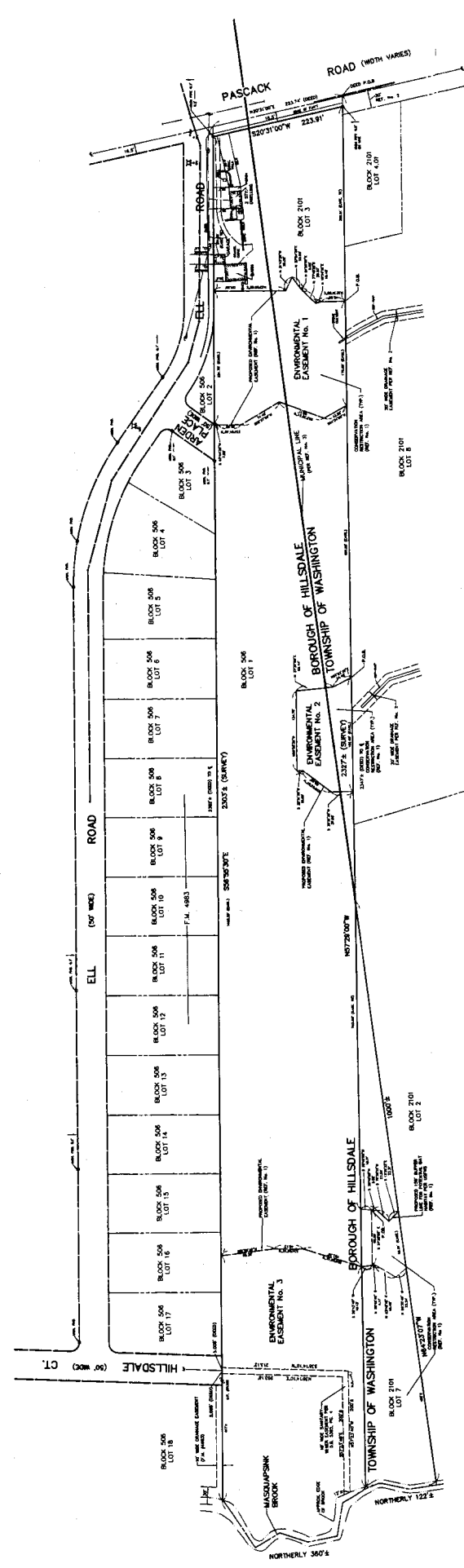
NOTE: THE PLAN HAS BEEN APPROVED BY THE TOWNSHIP OF WASHINGTON PLANNING BOARD ON 4/4/2016. THE PLAN HAS BEEN APPROVED BY THE TOWNSHIP OF WASHINGTON PLANNING BOARD ON 4/4/2016. THE PLAN HAS BEEN APPROVED BY THE TOWNSHIP OF WASHINGTON PLANNING BOARD ON 4/4/2016.

Regisitation Room Map # 6731 Filed 4/4/2016 Sheet 1 of 4





1. THE SURVEY IS BASED ON THE STATE PLAT MAP NO. 100, 101, 102, 103, 104, 105, 106, 107, 108, 109, 110, 111, 112, 113, 114, 115, 116, 117, 118, 119, 120, 121, 122, 123, 124, 125, 126, 127, 128, 129, 130, 131, 132, 133, 134, 135, 136, 137, 138, 139, 140, 141, 142, 143, 144, 145, 146, 147, 148, 149, 150, 151, 152, 153, 154, 155, 156, 157, 158, 159, 160, 161, 162, 163, 164, 165, 166, 167, 168, 169, 170, 171, 172, 173, 174, 175, 176, 177, 178, 179, 180, 181, 182, 183, 184, 185, 186, 187, 188, 189, 190, 191, 192, 193, 194, 195, 196, 197, 198, 199, 200, 201, 202, 203, 204, 205, 206, 207, 208, 209, 210, 211, 212, 213, 214, 215, 216, 217, 218, 219, 220, 221, 222, 223, 224, 225, 226, 227, 228, 229, 230, 231, 232, 233, 234, 235, 236, 237, 238, 239, 240, 241, 242, 243, 244, 245, 246, 247, 248, 249, 250, 251, 252, 253, 254, 255, 256, 257, 258, 259, 260, 261, 262, 263, 264, 265, 266, 267, 268, 269, 270, 271, 272, 273, 274, 275, 276, 277, 278, 279, 280, 281, 282, 283, 284, 285, 286, 287, 288, 289, 290, 291, 292, 293, 294, 295, 296, 297, 298, 299, 300, 301, 302, 303, 304, 305, 306, 307, 308, 309, 310, 311, 312, 313, 314, 315, 316, 317, 318, 319, 320, 321, 322, 323, 324, 325, 326, 327, 328, 329, 330, 331, 332, 333, 334, 335, 336, 337, 338, 339, 340, 341, 342, 343, 344, 345, 346, 347, 348, 349, 350, 351, 352, 353, 354, 355, 356, 357, 358, 359, 360, 361, 362, 363, 364, 365, 366, 367, 368, 369, 370, 371, 372, 373, 374, 375, 376, 377, 378, 379, 380, 381, 382, 383, 384, 385, 386, 387, 388, 389, 390, 391, 392, 393, 394, 395, 396, 397, 398, 399, 400, 401, 402, 403, 404, 405, 406, 407, 408, 409, 410, 411, 412, 413, 414, 415, 416, 417, 418, 419, 420, 421, 422, 423, 424, 425, 426, 427, 428, 429, 430, 431, 432, 433, 434, 435, 436, 437, 438, 439, 440, 441, 442, 443, 444, 445, 446, 447, 448, 449, 450, 451, 452, 453, 454, 455, 456, 457, 458, 459, 460, 461, 462, 463, 464, 465, 466, 467, 468, 469, 470, 471, 472, 473, 474, 475, 476, 477, 478, 479, 480, 481, 482, 483, 484, 485, 486, 487, 488, 489, 490, 491, 492, 493, 494, 495, 496, 497, 498, 499, 500, 501, 502, 503, 504, 505, 506, 507, 508, 509, 510, 511, 512, 513, 514, 515, 516, 517, 518, 519, 520, 521, 522, 523, 524, 525, 526, 527, 528, 529, 530, 531, 532, 533, 534, 535, 536, 537, 538, 539, 540, 541, 542, 543, 544, 545, 546, 547, 548, 549, 550, 551, 552, 553, 554, 555, 556, 557, 558, 559, 560, 561, 562, 563, 564, 565, 566, 567, 568, 569, 570, 571, 572, 573, 574, 575, 576, 577, 578, 579, 580, 581, 582, 583, 584, 585, 586, 587, 588, 589, 590, 591, 592, 593, 594, 595, 596, 597, 598, 599, 600, 601, 602, 603, 604, 605, 606, 607, 608, 609, 610, 611, 612, 613, 614, 615, 616, 617, 618, 619, 620, 621, 622, 623, 624, 625, 626, 627, 628, 629, 630, 631, 632, 633, 634, 635, 636, 637, 638, 639, 640, 641, 642, 643, 644, 645, 646, 647, 648, 649, 650, 651, 652, 653, 654, 655, 656, 657, 658, 659, 660, 661, 662, 663, 664, 665, 666, 667, 668, 669, 670, 671, 672, 673, 674, 675, 676, 677, 678, 679, 680, 681, 682, 683, 684, 685, 686, 687, 688, 689, 690, 691, 692, 693, 694, 695, 696, 697, 698, 699, 700, 701, 702, 703, 704, 705, 706, 707, 708, 709, 710, 711, 712, 713, 714, 715, 716, 717, 718, 719, 720, 721, 722, 723, 724, 725, 726, 727, 728, 729, 730, 731, 732, 733, 734, 735, 736, 737, 738, 739, 740, 741, 742, 743, 744, 745, 746, 747, 748, 749, 750, 751, 752, 753, 754, 755, 756, 757, 758, 759, 760, 761, 762, 763, 764, 765, 766, 767, 768, 769, 770, 771, 772, 773, 774, 775, 776, 777, 778, 779, 780, 781, 782, 783, 784, 785, 786, 787, 788, 789, 790, 791, 792, 793, 794, 795, 796, 797, 798, 799, 800, 801, 802, 803, 804, 805, 806, 807, 808, 809, 810, 811, 812, 813, 814, 815, 816, 817, 818, 819, 820, 821, 822, 823, 824, 825, 826, 827, 828, 829, 830, 831, 832, 833, 834, 835, 836, 837, 838, 839, 840, 841, 842, 843, 844, 845, 846, 847, 848, 849, 850, 851, 852, 853, 854, 855, 856, 857, 858, 859, 860, 861, 862, 863, 864, 865, 866, 867, 868, 869, 870, 871, 872, 873, 874, 875, 876, 877, 878, 879, 880, 881, 882, 883, 884, 885, 886, 887, 888, 889, 890, 891, 892, 893, 894, 895, 896, 897, 898, 899, 900, 901, 902, 903, 904, 905, 906, 907, 908, 909, 910, 911, 912, 913, 914, 915, 916, 917, 918, 919, 920, 921, 922, 923, 924, 925, 926, 927, 928, 929, 930, 931, 932, 933, 934, 935, 936, 937, 938, 939, 940, 941, 942, 943, 944, 945, 946, 947, 948, 949, 950, 951, 952, 953, 954, 955, 956, 957, 958, 959, 960, 961, 962, 963, 964, 965, 966, 967, 968, 969, 970, 971, 972, 973, 974, 975, 976, 977, 978, 979, 980, 981, 982, 983, 984, 985, 986, 987, 988, 989, 990, 991, 992, 993, 994, 995, 996, 997, 998, 999, 1000.



3-10-16	REVISION 1 - ENVIRONMENTAL EASEMENT NO. 3
3-10-16	REVISION 2 - ENVIRONMENTAL EASEMENT NO. 3
3-10-16	REVISION 3 - ENVIRONMENTAL EASEMENT NO. 3
3-10-16	REVISION 4 - ENVIRONMENTAL EASEMENT NO. 3
3-10-16	REVISION 5 - ENVIRONMENTAL EASEMENT NO. 3
3-10-16	REVISION 6 - ENVIRONMENTAL EASEMENT NO. 3
3-10-16	REVISION 7 - ENVIRONMENTAL EASEMENT NO. 3
3-10-16	REVISION 8 - ENVIRONMENTAL EASEMENT NO. 3
3-10-16	REVISION 9 - ENVIRONMENTAL EASEMENT NO. 3
3-10-16	REVISION 10 - ENVIRONMENTAL EASEMENT NO. 3
3-10-16	REVISION 11 - ENVIRONMENTAL EASEMENT NO. 3
3-10-16	REVISION 12 - ENVIRONMENTAL EASEMENT NO. 3
3-10-16	REVISION 13 - ENVIRONMENTAL EASEMENT NO. 3
3-10-16	REVISION 14 - ENVIRONMENTAL EASEMENT NO. 3
3-10-16	REVISION 15 - ENVIRONMENTAL EASEMENT NO. 3
3-10-16	REVISION 16 - ENVIRONMENTAL EASEMENT NO. 3
3-10-16	REVISION 17 - ENVIRONMENTAL EASEMENT NO. 3
3-10-16	REVISION 18 - ENVIRONMENTAL EASEMENT NO. 3
3-10-16	REVISION 19 - ENVIRONMENTAL EASEMENT NO. 3
3-10-16	REVISION 20 - ENVIRONMENTAL EASEMENT NO. 3
3-10-16	REVISION 21 - ENVIRONMENTAL EASEMENT NO. 3
3-10-16	REVISION 22 - ENVIRONMENTAL EASEMENT NO. 3
3-10-16	REVISION 23 - ENVIRONMENTAL EASEMENT NO. 3
3-10-16	REVISION 24 - ENVIRONMENTAL EASEMENT NO. 3
3-10-16	REVISION 25 - ENVIRONMENTAL EASEMENT NO. 3
3-10-16	REVISION 26 - ENVIRONMENTAL EASEMENT NO. 3
3-10-16	REVISION 27 - ENVIRONMENTAL EASEMENT NO. 3
3-10-16	REVISION 28 - ENVIRONMENTAL EASEMENT NO. 3
3-10-16	REVISION 29 - ENVIRONMENTAL EASEMENT NO. 3
3-10-16	REVISION 30 - ENVIRONMENTAL EASEMENT NO. 3
3-10-16	REVISION 31 - ENVIRONMENTAL EASEMENT NO. 3
3-10-16	REVISION 32 - ENVIRONMENTAL EASEMENT NO. 3
3-10-16	REVISION 33 - ENVIRONMENTAL EASEMENT NO. 3
3-10-16	REVISION 34 - ENVIRONMENTAL EASEMENT NO. 3
3-10-16	REVISION 35 - ENVIRONMENTAL EASEMENT NO. 3
3-10-16	REVISION 36 - ENVIRONMENTAL EASEMENT NO. 3
3-10-16	REVISION 37 - ENVIRONMENTAL EASEMENT NO. 3
3-10-16	REVISION 38 - ENVIRONMENTAL EASEMENT NO. 3
3-10-16	REVISION 39 - ENVIRONMENTAL EASEMENT NO. 3
3-10-16	REVISION 40 - ENVIRONMENTAL EASEMENT NO. 3
3-10-16	REVISION 41 - ENVIRONMENTAL EASEMENT NO. 3
3-10-16	REVISION 42 - ENVIRONMENTAL EASEMENT NO. 3
3-10-16	REVISION 43 - ENVIRONMENTAL EASEMENT NO. 3
3-10-16	REVISION 44 - ENVIRONMENTAL EASEMENT NO. 3
3-10-16	REVISION 45 - ENVIRONMENTAL EASEMENT NO. 3
3-10-16	REVISION 46 - ENVIRONMENTAL EASEMENT NO. 3
3-10-16	REVISION 47 - ENVIRONMENTAL EASEMENT NO. 3
3-10-16	REVISION 48 - ENVIRONMENTAL EASEMENT NO. 3
3-10-16	REVISION 49 - ENVIRONMENTAL EASEMENT NO. 3
3-10-16	REVISION 50 - ENVIRONMENTAL EASEMENT NO. 3
3-10-16	REVISION 51 - ENVIRONMENTAL EASEMENT NO. 3
3-10-16	REVISION 52 - ENVIRONMENTAL EASEMENT NO. 3
3-10-16	REVISION 53 - ENVIRONMENTAL EASEMENT NO. 3
3-10-16	REVISION 54 - ENVIRONMENTAL EASEMENT NO. 3
3-10-16	REVISION 55 - ENVIRONMENTAL EASEMENT NO. 3
3-10-16	REVISION 56 - ENVIRONMENTAL EASEMENT NO. 3
3-10-16	REVISION 57 - ENVIRONMENTAL EASEMENT NO. 3
3-10-16	REVISION 58 - ENVIRONMENTAL EASEMENT NO. 3
3-10-16	REVISION 59 - ENVIRONMENTAL EASEMENT NO. 3
3-10-16	REVISION 60 - ENVIRONMENTAL EASEMENT NO. 3
3-10-16	REVISION 61 - ENVIRONMENTAL EASEMENT NO. 3
3-10-16	REVISION 62 - ENVIRONMENTAL EASEMENT NO. 3
3-10-16	REVISION 63 - ENVIRONMENTAL EASEMENT NO. 3
3-10-16	REVISION 64 - ENVIRONMENTAL EASEMENT NO. 3
3-10-16	REVISION 65 - ENVIRONMENTAL EASEMENT NO. 3
3-10-16	REVISION 66 - ENVIRONMENTAL EASEMENT NO. 3
3-10-16	REVISION 67 - ENVIRONMENTAL EASEMENT NO. 3
3-10-16	REVISION 68 - ENVIRONMENTAL EASEMENT NO. 3
3-10-16	REVISION 69 - ENVIRONMENTAL EASEMENT NO. 3
3-10-16	REVISION 70 - ENVIRONMENTAL EASEMENT NO. 3
3-10-16	REVISION 71 - ENVIRONMENTAL EASEMENT NO. 3
3-10-16	REVISION 72 - ENVIRONMENTAL EASEMENT NO. 3
3-10-16	REVISION 73 - ENVIRONMENTAL EASEMENT NO. 3
3-10-16	REVISION 74 - ENVIRONMENTAL EASEMENT NO. 3
3-10-16	REVISION 75 - ENVIRONMENTAL EASEMENT NO. 3
3-10-16	REVISION 76 - ENVIRONMENTAL EASEMENT NO. 3
3-10-16	REVISION 77 - ENVIRONMENTAL EASEMENT NO. 3
3-10-16	REVISION 78 - ENVIRONMENTAL EASEMENT NO. 3
3-10-16	REVISION 79 - ENVIRONMENTAL EASEMENT NO. 3
3-10-16	REVISION 80 - ENVIRONMENTAL EASEMENT NO. 3
3-10-16	REVISION 81 - ENVIRONMENTAL EASEMENT NO. 3
3-10-16	REVISION 82 - ENVIRONMENTAL EASEMENT NO. 3
3-10-16	REVISION 83 - ENVIRONMENTAL EASEMENT NO. 3
3-10-16	REVISION 84 - ENVIRONMENTAL EASEMENT NO. 3
3-10-16	REVISION 85 - ENVIRONMENTAL EASEMENT NO. 3
3-10-16	REVISION 86 - ENVIRONMENTAL EASEMENT NO. 3
3-10-16	REVISION 87 - ENVIRONMENTAL EASEMENT NO. 3
3-10-16	REVISION 88 - ENVIRONMENTAL EASEMENT NO. 3
3-10-16	REVISION 89 - ENVIRONMENTAL EASEMENT NO. 3
3-10-16	REVISION 90 - ENVIRONMENTAL EASEMENT NO. 3
3-10-16	REVISION 91 - ENVIRONMENTAL EASEMENT NO. 3
3-10-16	REVISION 92 - ENVIRONMENTAL EASEMENT NO. 3
3-10-16	REVISION 93 - ENVIRONMENTAL EASEMENT NO. 3
3-10-16	REVISION 94 - ENVIRONMENTAL EASEMENT NO. 3
3-10-16	REVISION 95 - ENVIRONMENTAL EASEMENT NO. 3
3-10-16	REVISION 96 - ENVIRONMENTAL EASEMENT NO. 3
3-10-16	REVISION 97 - ENVIRONMENTAL EASEMENT NO. 3
3-10-16	REVISION 98 - ENVIRONMENTAL EASEMENT NO. 3
3-10-16	REVISION 99 - ENVIRONMENTAL EASEMENT NO. 3
3-10-16	REVISION 100 - ENVIRONMENTAL EASEMENT NO. 3

Requisition Room Map # 6731  
 Filed 4/4/2016

MAP - EXHIBIT - B

Sheet 4044