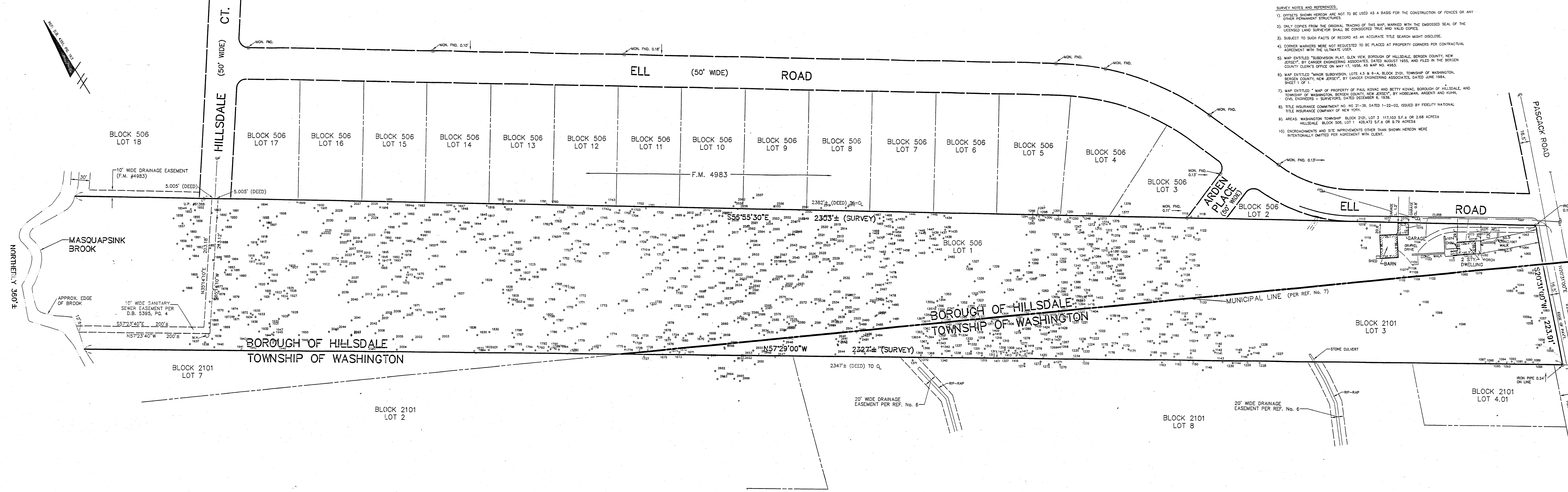


- SURVEY NOTES AND REFERENCES:
1. OFFSETS SHOWN HEREIN ARE NOT TO BE USED AS A BASIS FOR THE CONSTRUCTION OF FENCES OR ANY OTHER PERMANENT STRUCTURES.
 2. ONLY COMES FROM THE ORIGINAL TRACKING OF THIS MAP. HANDMADE WITH THE EMBOSSED SEAL OF THE LICENSED LAND SURVEYOR SHALL BE CONSIDERED TRUE AND VALID COPIES.
 3. SUBJECT TO SUCH FACTS OF RECORD AS AN ACCURATE TITLE SEARCH MIGHT DISCLOSE.
 4. CORNER MARKERS WERE NOT REQUESTED TO BE PLACED AT PROPERTY CORNERS PER CONTRACTUAL AGREEMENT WITH THE ULTIMATE USER.
 5. MAP ENTITLED "SUBDIVISION OF GLEN VIEW BOROUGH OF HILLSDALE, BERGEN COUNTY, NEW JERSEY," BY CANGER ENGINEERING ASSOCIATES, DATED AUGUST 1985, AND FILED IN THE BERGEN COUNTY CLERK'S OFFICE ON MAY 17, 1986, AS MAP NO. 4485.
 6. MAP ENTITLED "UNION SUBDIVISION, LOTS 4.5 & 6-A, BLOCK 2101, TOWNSHIP OF WASHINGTON, BERGEN COUNTY, NEW JERSEY," BY CANGER ENGINEERING ASSOCIATES, DATED JUNE 1984, SHEET 1 OF 1.
 7. MAP ENTITLED "MAP OF PROPERTY OF PAUL KOVAC AND BETTY KOVAC, BOROUGH OF HILLSDALE, AND TOWNSHIP OF WASHINGTON, BERGEN COUNTY, NEW JERSEY," BY HOEHLMAN, ARGENTI AND KOPPEL, CIVIL ENGINEERS - SURVEYORS, DATED OCTOBER 6, 1999.
 8. TITLE INSURANCE COMMITMENT NO. 80-21-38, DATED 1-22-02, ISSUED BY FIDELITY NATIONAL TITLE INSURANCE COMPANY OF NEW JERSEY.
 9. AREAS WITHIN TOWNSHIP BLOCK 2101, LOT 3 117,103 S.F. OR 2.68 ACRES HILLSDALE BLOCK 506, LOT 1 428,472 S.F. OR 9.79 ACRES.
 10. ENCROACHMENTS AND SITE IMPROVEMENTS OTHER THAN SHOWN HEREIN WERE INTENTIONALLY OMITTED PER AGREEMENT WITH CLIENT.



1059 TREE 9"	1100 TREE 11"	1200 TREE 2"	1300 TREE 10"	1400 TREE 20"	1685 TREE 9"	1783 TREE 10"	1883 TREE 10"	1983 TREE 8"	2083 TREE 10"	2183 TREE 8"	2283 TREE 10"	2383 TREE 10"	2483 TREE 10"	2583 TREE 10"	2683 TREE 10"	2783 TREE 10"	2883 TREE 10"	2983 TREE 10"	3083 TREE 10"	3183 TREE 10"	3283 TREE 10"	3383 TREE 10"	3483 TREE 10"	3583 TREE 10"	3683 TREE 10"	3783 TREE 10"	3883 TREE 10"	3983 TREE 10"	4083 TREE 10"	4183 TREE 10"	4283 TREE 10"	4383 TREE 10"	4483 TREE 10"	4583 TREE 10"	4683 TREE 10"	4783 TREE 10"	4883 TREE 10"	4983 TREE 10"	5083 TREE 10"	5183 TREE 10"	5283 TREE 10"	5383 TREE 10"	5483 TREE 10"	5583 TREE 10"	5683 TREE 10"	5783 TREE 10"	5883 TREE 10"	5983 TREE 10"	6083 TREE 10"	6183 TREE 10"	6283 TREE 10"	6383 TREE 10"	6483 TREE 10"	6583 TREE 10"	6683 TREE 10"	6783 TREE 10"	6883 TREE 10"	6983 TREE 10"	7083 TREE 10"	7183 TREE 10"	7283 TREE 10"	7383 TREE 10"	7483 TREE 10"	7583 TREE 10"	7683 TREE 10"	7783 TREE 10"	7883 TREE 10"	7983 TREE 10"	8083 TREE 10"	8183 TREE 10"	8283 TREE 10"	8383 TREE 10"	8483 TREE 10"	8583 TREE 10"	8683 TREE 10"	8783 TREE 10"	8883 TREE 10"	8983 TREE 10"	9083 TREE 10"	9183 TREE 10"	9283 TREE 10"	9383 TREE 10"	9483 TREE 10"	9583 TREE 10"	9683 TREE 10"	9783 TREE 10"	9883 TREE 10"	9983 TREE 10"
--------------	---------------	--------------	---------------	---------------	--------------	---------------	---------------	--------------	---------------	--------------	---------------	---------------	---------------	---------------	---------------	---------------	---------------	---------------	---------------	---------------	---------------	---------------	---------------	---------------	---------------	---------------	---------------	---------------	---------------	---------------	---------------	---------------	---------------	---------------	---------------	---------------	---------------	---------------	---------------	---------------	---------------	---------------	---------------	---------------	---------------	---------------	---------------	---------------	---------------	---------------	---------------	---------------	---------------	---------------	---------------	---------------	---------------	---------------	---------------	---------------	---------------	---------------	---------------	---------------	---------------	---------------	---------------	---------------	---------------	---------------	---------------	---------------	---------------	---------------	---------------	---------------	---------------	---------------	---------------	---------------	---------------	---------------	---------------	---------------	---------------	---------------	---------------	---------------

ENTEC PROJECT No. 00-058.6 DWG. No. 4a of II

TREE LOCATION MAP
FOR
CALIBER BUILDERS
BLOCK 506, LOT 1
TOWNSHIP OF WASHINGTON, BLOCK 2101, LOT 3
BERGEN COUNTY, NEW JERSEY

LAPATKA ASSOCIATES, INC.
12 RAUTE VILLAGE SUITE 230
PARAMUS, N.J. 07652
(201) 341-3610

ENGINEERS - LANDSCAPE ARCHITECTS - SURVEYORS

ALEXANDER J. LAPATKA
P.E. 28218
JEFFREY H. KLEINE
L.S. 35848

DATE: [] [] [] [] [] [] [] [] [] []
DRAWN: [] [] [] [] [] [] [] [] [] []
CHECKED: [] [] [] [] [] [] [] [] [] []
SCALE: 1" = 60'
DATE: 8-3-02
SHEET: 1 of 1
PROJECT: 01-155