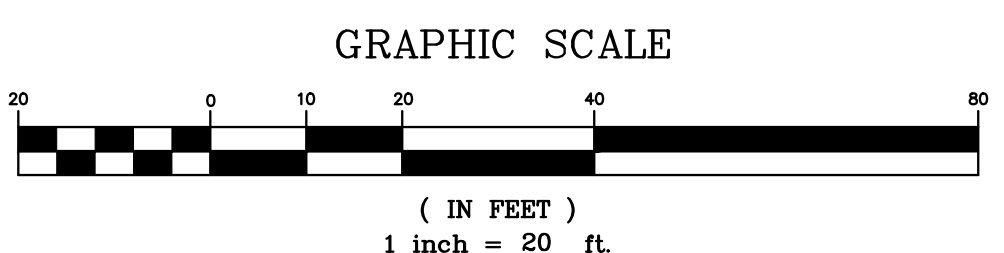
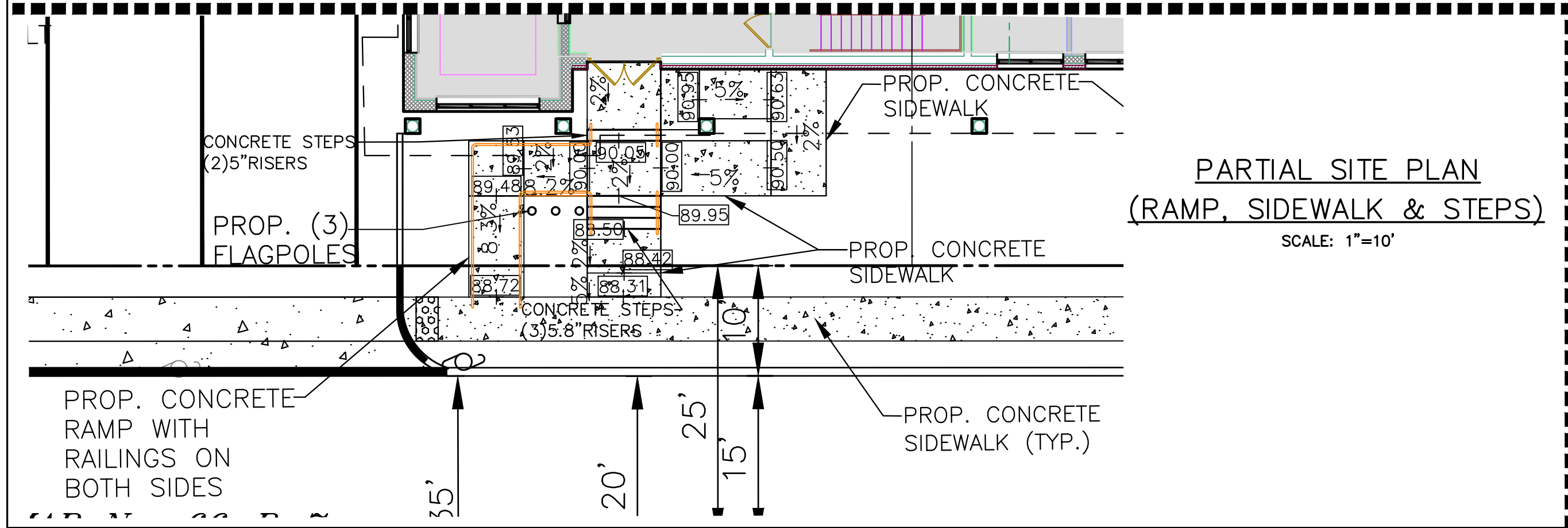
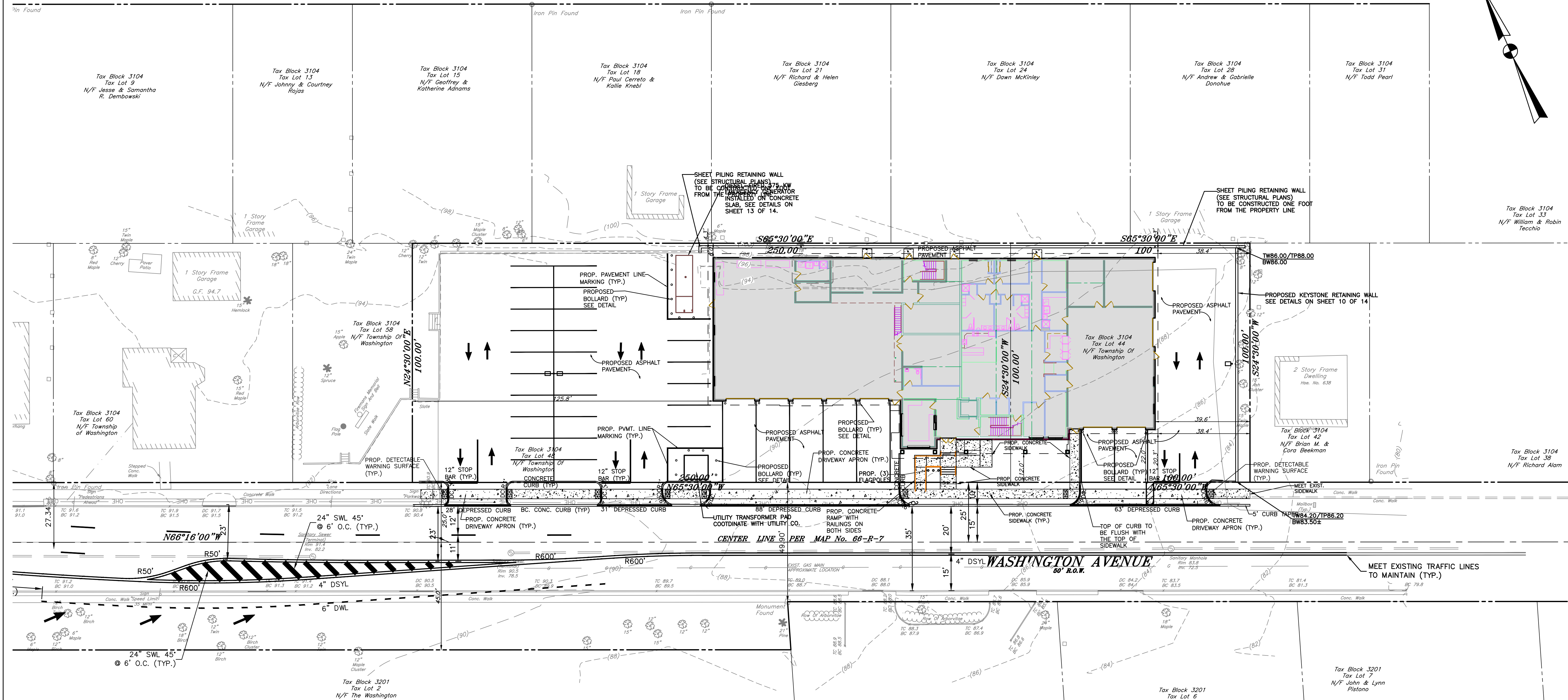
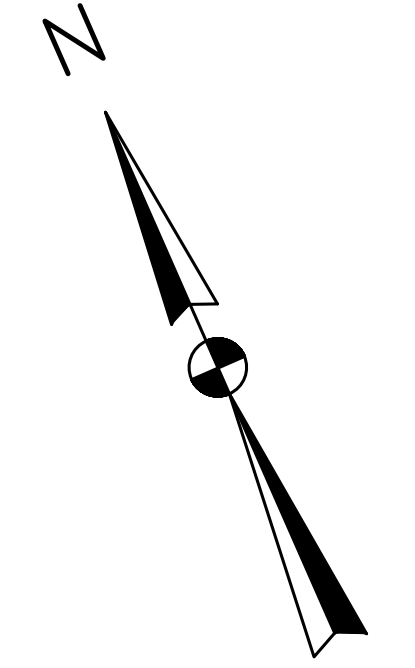


**McKINLEY AVENUE**  
50' R.O.W.



NO.	DATE	DESCRIPTION	SURVEYED BY	DESIGNED BY	CHECKED BY
1	7.21.2020	REVISED AS PER BERGEN COUNTY PB.'S COMMENTS	LS	LS	JLM

**BOSWELL ENGINEERING**  
ENGINEERS - SURVEYORS - PLANNERS - SCIENTISTS  
330 PHILLIPS AVENUE, SOUTH HACKENSACK, N.J. 07606  
TEL: (201) 641-0770 • FAX: (201) 641-1831  
N.J. CERTIFICATE OF AUTHORIZATION No. 24GA27958000

**STEPHEN T. BOSWELL**  
PROFESSIONAL ENGINEER N.J. LIC. 34680

**JEFFREY L. MORRIS**  
PROFESSIONAL ENGINEER N.J. LIC. 30979

**EMERGENCY SERVICES COMPLEX**  
656 WASHINGTON AVENUE  
SITE PLAN  
LOTS 44 AND 48 BLOCK 3104  
WASHINGTON TOWNSHIP  
BERGEN COUNTY NEW JERSEY  
SURVEYED BY: J.L.M. DESIGNED BY: J.L.M. SCALE: 1"=20' JOB NO. DATE  
DRAWN BY: G.K.T. CHECKED BY: J.L.M. WT-110 07.06.2020  
DRAWING NO. WT-110-SP SHEET 4 OF 14